

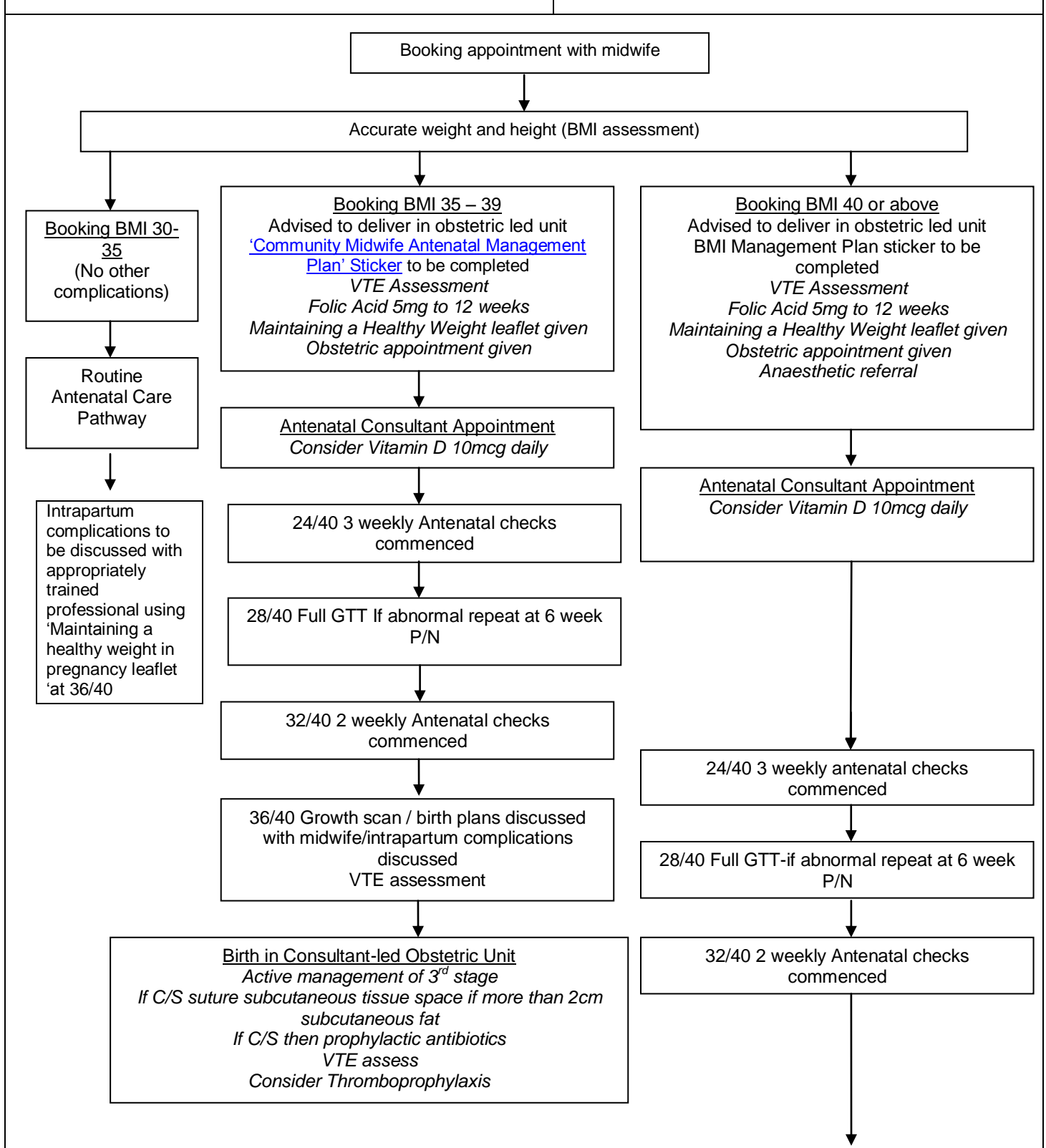
# MANAGEMENT OF THE OBESE PREGNANT WOMAN ACTION CARD

**TITLE – Care Pathway for Women with BMI of 30 and above**

**A2001**

**FOR USE BY:** Midwives

**LIAISES WITH:** Anaesthetists, Obstetricians



36/40 Growth scan  
Weight reassessed, birth plans discussed with midwife  
VTE assessment  
Tissue viability & manual handling assessment (waterlow score) using the '[Tissue Viability and Manual Handling Assessment for Women BMI 40 or Over](#)'. This can be downloaded, completed and secured in the Maternity Health Records.

Birth in Consultant-led Obstetric Unit

Suture subcutaneous tissue space if there is greater than 2cm subcutaneous fat

Duty Anaesthetist informed, Anaesthetic sticker with documented anaesthetic management plan to go in pink birth notes.

Senior Obstetrician and Senior Anaesthetist informed of admission. The senior Obstetrician should consider attending if operative delivery is required

Active management of 3<sup>rd</sup> stage of labour

IV access established early

Consider epidural

Post birth  
*Fragmin 5000iu, BD Subcutaneous for 7 days*  
*Physiotherapy involvement*  
*Dietician involvement*  
*Tissue viability assessment (waterlow score)*

On admission in labour, midwife to be aware of the manual handling requirements for childbirth and consider tissue viability issues using the '[Tissue Viability and Manual Handling Assessment for Women BMI 40 or Over](#)'. This can be downloaded, completed and secured in the Maternity Health Records if not already present.

**ALWAYS ENSURE ALL RELEVANT ACTIONS ARE DOCUMENTED!**